

# 10x38mm Photovoltaic Fuse Links for Solar Panel Applications

## 1A to 20A, 1000Vdc Solar PV Series



Catalogue Symbol: PV-(amp rating)A10F  
 PV-(amp rating)A10-T  
 PV-(amp rating)A10-1P  
 PV-(amp rating)A10-2P

Class of Operation: gPV and UL PV fuse links

Fuse Size: 10x38mm

Fuse Holders: PCB Clip: 1A3400-09  
 DIN-Rail modular fuse holders:  
 - CHPV1U (1-pole non-indicating)  
 - CHPV1IU (1-pole neon indicating)

Standards/Approvals:  
 IEC 60269-6, UL 2579 (File number E335324), CSA,  
 CCC (1-15A), RoHS compliant.

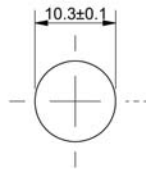
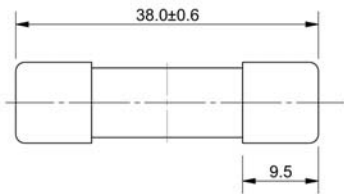
**Description:** A range of fuse links in a 10x38mm package specifically designed for the protection and isolation of photovoltaic strings. The fuse links are capable of interrupting low overcurrents associated with faulted PV (reverse current, multi-array fault) string arrays.

**Packaging:** MOQ: 10  
 Packaging 100% recyclable

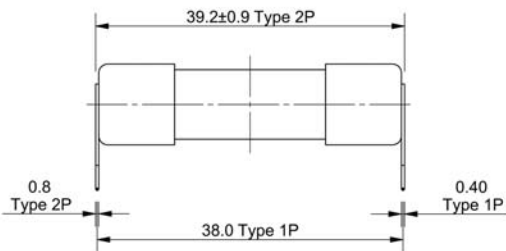
**Technical Data:**  
 Rated Voltage: 1000Vdc  
 Rated Current: 1-6A, 8-15A and 20A  
 Rated Breaking Capacity: 50kA (IEC and UL)

Min Interrupting Rating:  $1.3 \times I_n$   
 PV Fuse Coordination w/: Thin film cells and 4", 5" and 6" crystalline silicon cells.  
 Time Constant: 1-3ms

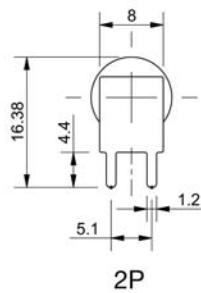
### Dimensions - mm



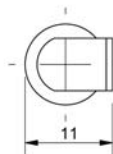
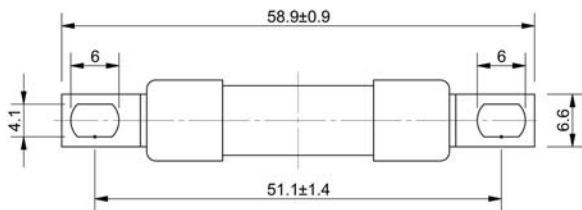
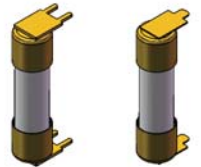
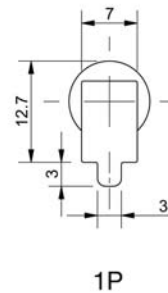
**CYLINDRICAL**  
 PV-(amp rating)A10F



PV-(amp rating)A10-2P



**PCB FIXING**  
 PV-(amp rating)A10-1P



**BOLT FIXING**  
 PV-(amp rating)A10-T



# 10x38mm Photovoltaic Fuse Links for Solar Panel Applications

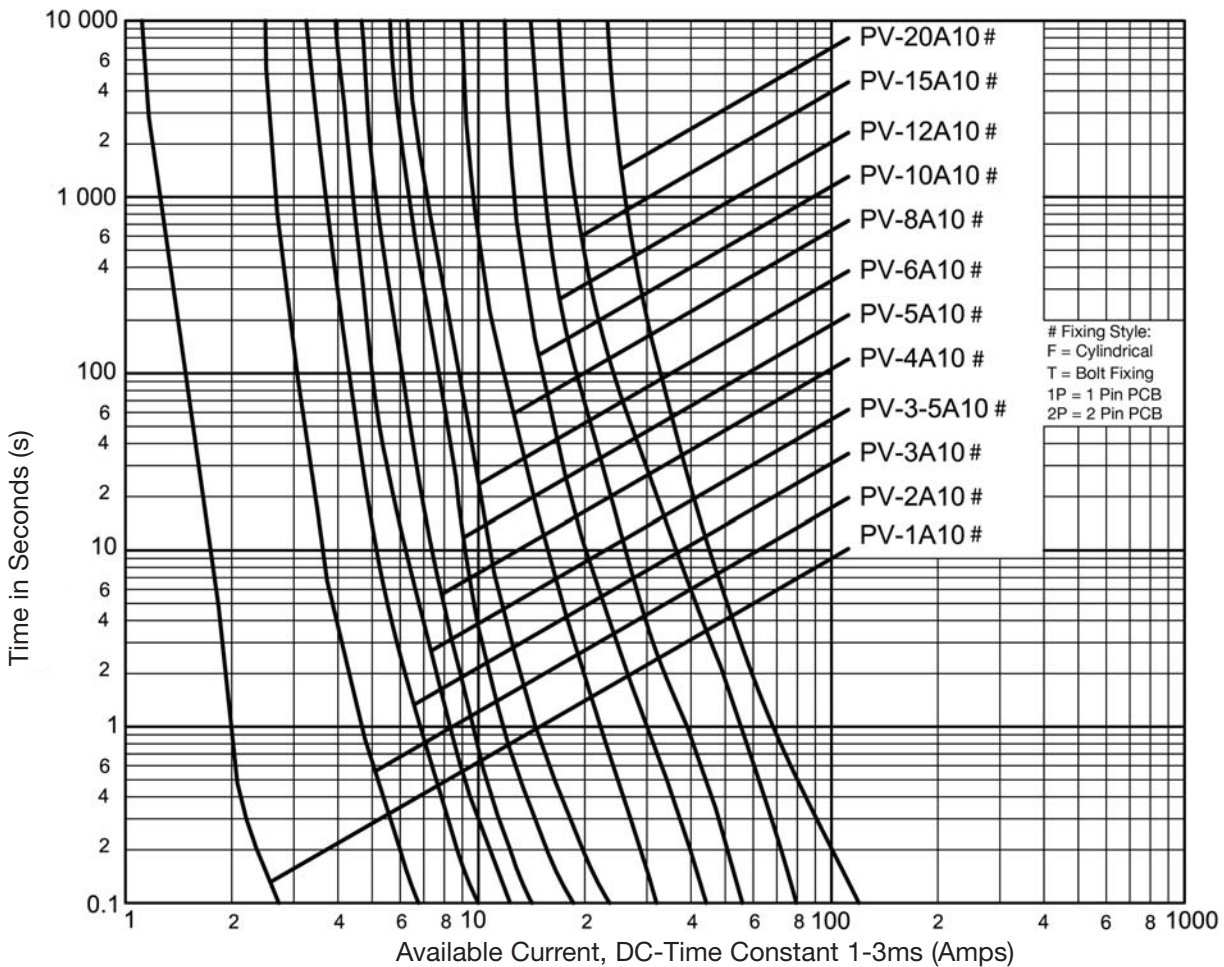
## 1A to 20A, 1000Vdc Solar PV Series



### Technical Data

Catalogue Numbers				Rated Current (Amps)	Rated Voltage (Vdc)	I <sup>2</sup> t (A <sup>2</sup> s)		Watts Loss (W)	
Cylindrical	Bolt Fixing	PCB Fixing Single Pin	PCB Fixing Double Pin			Pre-Arcing	Total at 1000V	0.8 I <sub>n</sub>	I <sub>n</sub>
PV-1A10F	PV-1A10-T	PV-1A10-1P	PV-1A10-2P	1	1000	0.15	0.4	0.8	1.5
PV-2A10F	PV-2A10-T	PV-2A10-1P	PV-2A10-2P	2		1.2	3.4	0.6	1.0
PV-3A10F	PV-3A10-T	PV-3A10-1P	PV-3A10-2P	3		4	11	0.8	1.3
PV-3-5A10F	PV-3-5A10-T	PV-3-5A10-1P	PV-3-5A10-2P	3.5		6.6	18	0.9	1.4
PV-4A10F	PV-4A10-T	PV-4A10-1P	PV-4A10-2P	4		9.5	26	1.0	1.5
PV-5A10F	PV-5A10-T	PV-5A10-1P	PV-5A10-2P	5		19	50	1.0	1.6
PV-6A10F	PV-6A10-T	PV-6A10-1P	PV-6A10-2P	6		30	90	1.1	1.8
PV-8A10F	PV-8A10-T	PV-8A10-1P	PV-8A10-2P	8		3	32	1.2	2.1
PV-10A10F	PV-10A10-T	PV-10A10-1P	PV-10A10-2P	10		7	70	1.2	2.3
PV-12A10F	PV-12A10-T	PV-12A10-1P	PV-12A10-2P	12		12	120	1.5	2.7
PV-15A10F	PV-15A10-T	PV-15A10-1P	PV-15A10-2P	15		22	220	1.7	2.9
PV-20A10F	PV-20A10-T	PV-20A10-1P	PV-20A10-2P	20		34	350	2.1	3.6

### Time-Current Characteristics

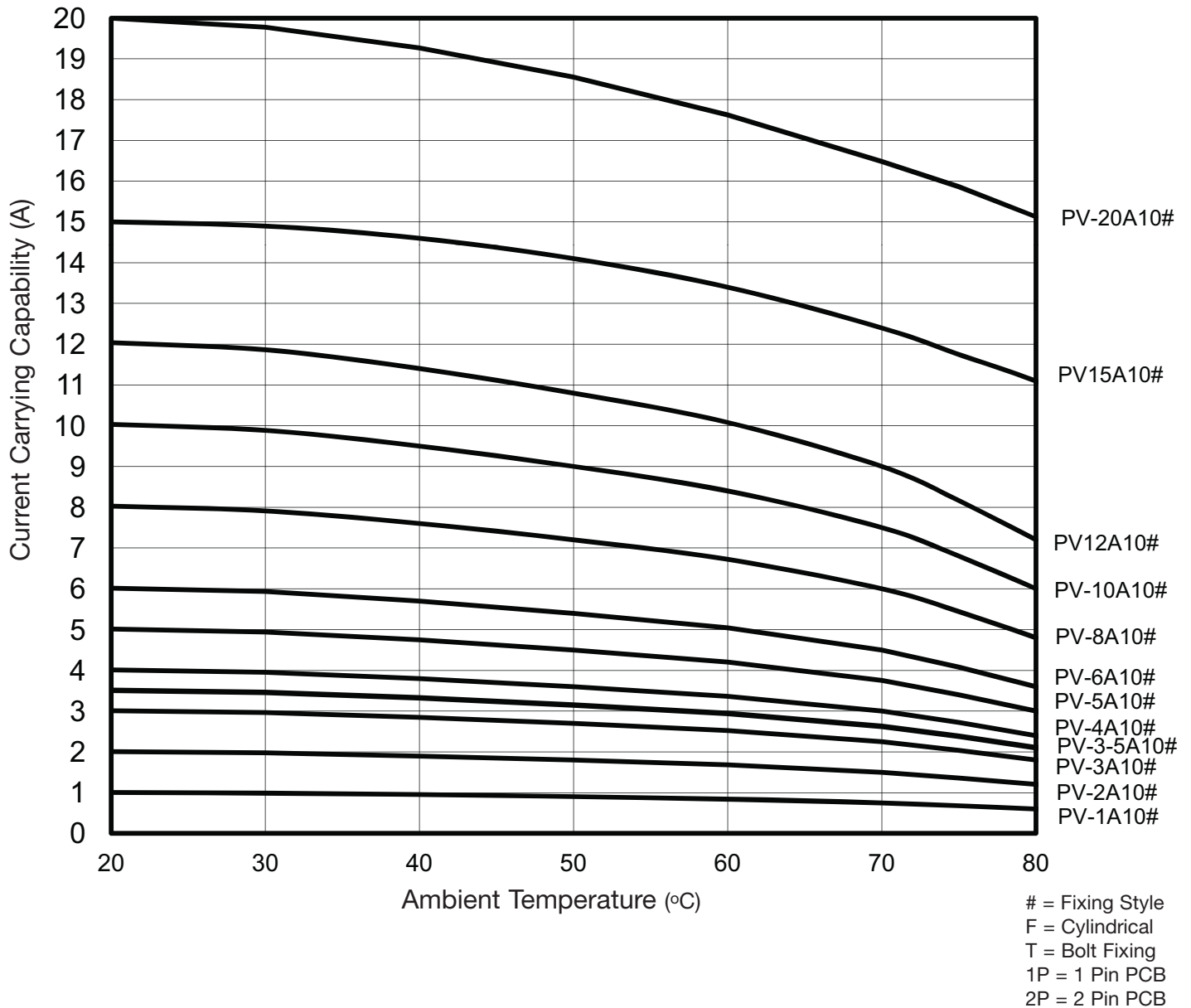


# 10x38mm Photovoltaic Fuse Links for Solar Panel Applications

## 1A to 20A, 1000Vdc Solar PV Series



### Temperature Derating



No additional derating is required for PV fuse links installed in ganged modular fuse holders without spacing between units, provided that the rating used is  $>1.56 \times I_{sc}$ .

The only controlled copy of this Data Sheet is the electronic read-only version located on the Cooper Bussmann Network Drive. All other copies of this document are by definition uncontrolled. This bulletin is intended to clearly present comprehensive product data and provide technical information that will help the end user with design applications. Cooper Bussmann reserves the right, without notice, to change design or construction of any products and to discontinue or limit distribution of any products. Cooper Bussmann also reserves the right to change or update, without notice, any technical information contained in this bulletin. Once a product has been selected, it should be tested by the user in all possible applications.